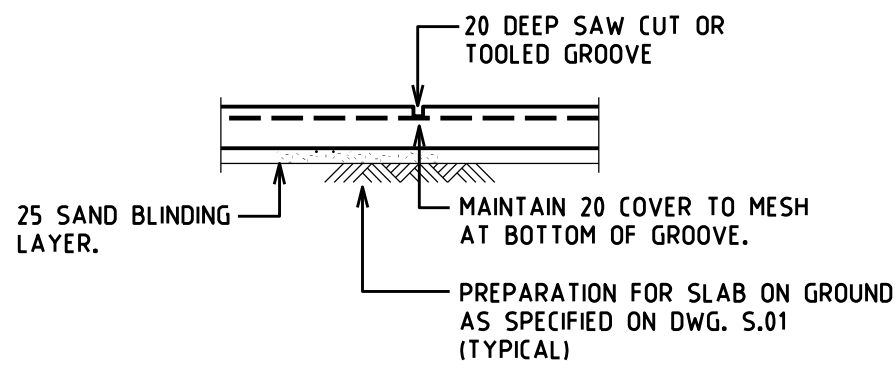
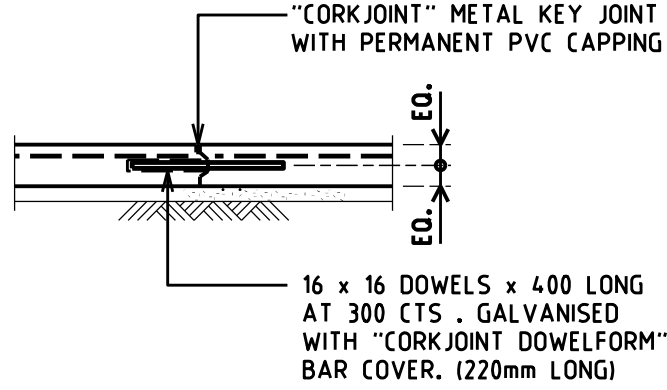


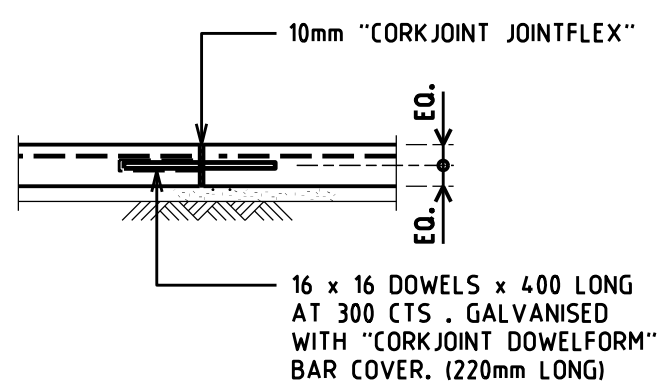
ISOLATION JOINT



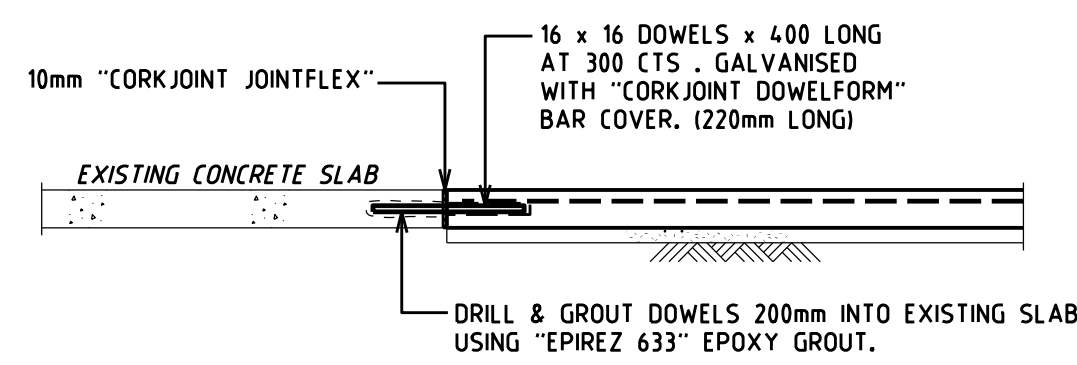
SAWN/TOOLED JOINT DETAIL  
INSTALLED AT 3000mm MAXIMUM CENTRES SPACING



DOWELLED KEY JOINT DETAIL  
INSTALLED AT 6000mm MAXIMUM CENTRES SPACING

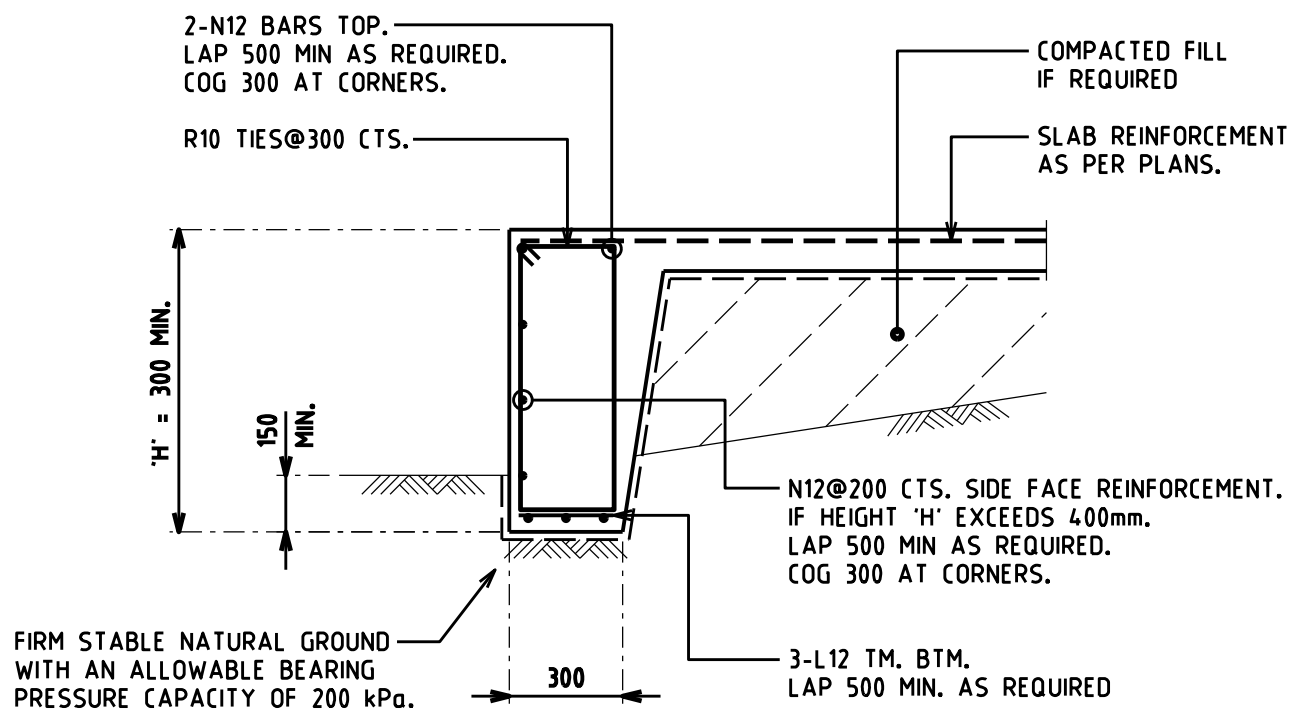


EXPANSION JOINT DETAIL  
INSTALLED AT 18000mm MAXIMUM CENTRES SPACING

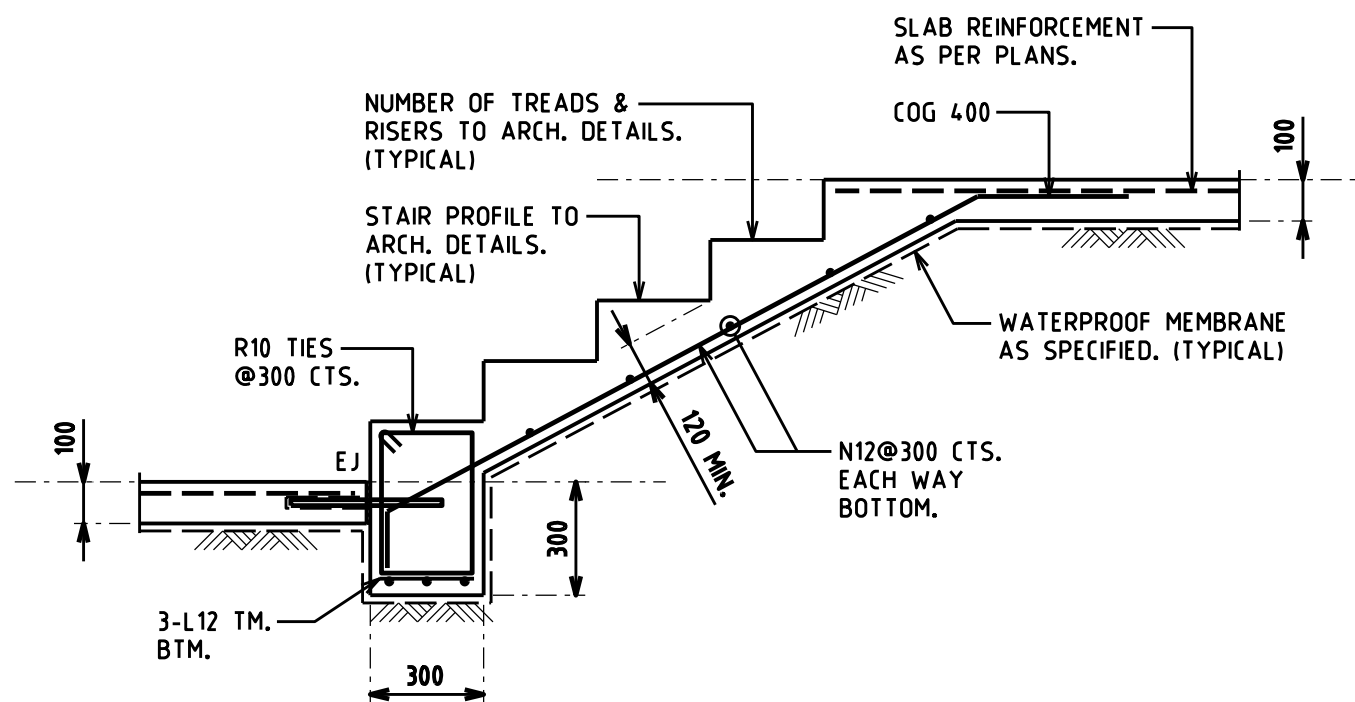


TYPICAL JUNCTION WITH EXISTING SLAB PAVEMENT U.N.O.  
SCALE 1:20

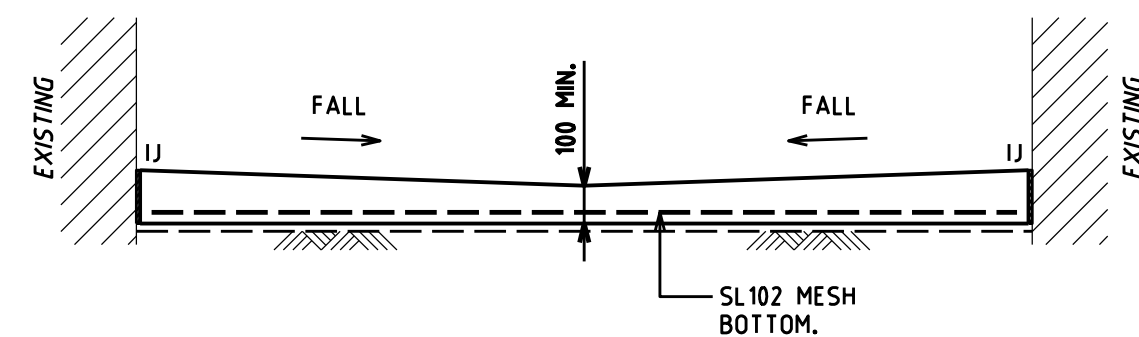
TYPICAL CONCRETE PAVEMENT JOINT DETAILS U.N.O.  
SCALE 1:20



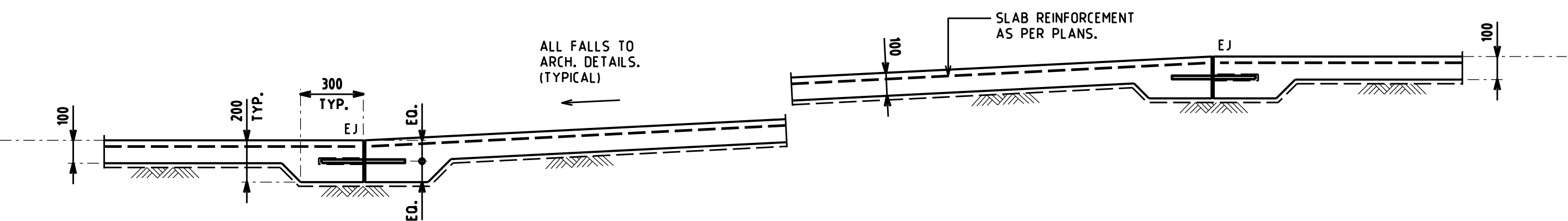
TYPICAL 'ET' EDGE THICKENING DETAIL U.N.O.  
SCALE 1:20  
USE AS REQUIRED.



TYPICAL EXTERNAL STAIR ON GROUND DETAIL U.N.O.  
SCALE 1:20



TYPICAL CROSS SECTION THROUGH 'V' DRAIN DETAIL U.N.O.  
SCALE 1:20



TYPICAL RAMP ON GROUND DETAIL U.N.O.  
SCALE 1:20

DEVELOPMENT APPLICATION

249/2020

Randwick City Council  
4 June 2020  
Records Received

DA ISSUE  
NOT FOR CONSTRUCTION

DA1	DA SUBMISSION		20.02.20
ISSUE	DESCRIPTION	APPROVED	DATE

ARCHITECT  
QOH ARCHITECTS  
QUINN O'HANLON ARCHITECTS PTY. LTD.  
1/153 VICTORIA ROAD, GLADESVILLE NSW 2111  
T: (02) 9420 3155 F: (02) 9240 3655  
W: www.qoh.net.au



CONSULTING STRUCTURAL & CIVIL ENGINEERS  
105 MEREWETHER STREET, MEREWETHER NSW 2291  
tel: (02) 4049 4855 email: pprogan@birzulisassociates.com  
www.birzulisassociates.com

PROJECT

CHAMPAGNAT CATHOLIC COLLEGE  
BLOCK B - MAROUBRA NSW

TITLE

EXTERNAL WORKS DETAILS

SCALES as noted @A1 DATE FEB' 2020

DRAWN JSS DESIGN PG VERIFIED APPROVED

REPRODUCTION OF THIS DRAWING IS PROHIBITED  
WITHOUT THE CONSENT OF BIRZULIS ASSOCIATES PTY. LTD.

ISSUE	PROJECT No.	DRAWING No.
DA1	191001	C.02